

**VELUX
COMMERCIAL
INSPIRATION
BOOK**



Public buildings



Offices



Industrial and
warehousing



Sports facilities



Education



Healthcare



Hotels and
conference centres



Retail and
shopping malls



Airports and
railway stations



Your
building project

VELUX Commercial is a division under the VELUX Brand. We offer daylight solutions for commercial buildings.

We design, manufacture and market daylight solutions for commercial buildings such as offices, schools, healthcare facilities, airports, shopping malls and retail stores, large public buildings, railway stations and industrial buildings.

The VELUX Group's first step into the commercial market was with VELUX Modular Skylights in 2011. During 2018, the VELUX Group acquired three skylight companies: Wasco Skylights, Vitral roof glazing and the JET Group.

Together we are VELUX Commercial.



VELUX COMMERCIAL
REFERENCE CASES

INDEX REFERENCE CASES

OFFICES



Logistic company
Jaspers-Eyers Architects
Belgium

8

EDUCATION



Freinetschool de Harp
Maarten Dobbelaere
Belgium

14

PUBLIC BUILDINGS



Base de loisir
Bernard COLLET Architecte
Belgium

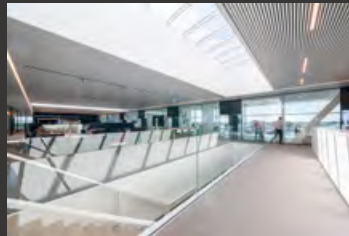
18

RETAIL AND SHOPPING MALLS



YGO
Tecro & Krea
Belgium

20



Head office Cordeel
Binst Architects
Belgium

12



RHIZO Lyceum OLV
Sweco Belgium
Belgium

16



Dovy Dendermonde
Ypsilon Architecten
Belgium

22



Office Binst Architects
Binst Architects
Belgium

10

HEALTHCARE



Amphia hospital
Wiegerinck Architecten
The Netherlands

24

AIRPORTS AND RAILWAY STATIONS



Zaandam railway station
Karel Hendrik van Brederode
The Netherlands

26

SPORTS FACILITIES



Sportcomplex De Pluimen
AVA Partners
Belgium

28



Sportfacility Bertrange
Architectuur & urbanisme 21
Luxembourg

30

HOTELS AND CONFERENCE CENTRES



Van Der Valk Hotel Mechelen
DAE
Belgium

32

INDUSTRIAL AND WAREHOUSING



Fluvius
Archipelago
Belgium

34



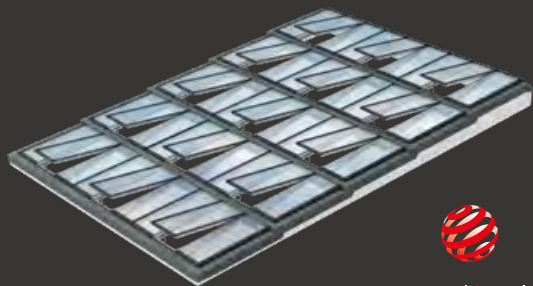
LOGISTICS COMPANY
Offices

Location: Laakdal, Belgium
Project type: New build
Architects: Jaspers-Eyers Architects
Contractor: Stadsbader NV
Year of construction: 2019
Photographer: Jasper Leonard

Distribution centre with charisma and limited environmental impact.

The complex is used for e-commerce and distribution to 38 countries. The goal is not just to increase efficiency but also sustainability. The complex receives most of its provisions by water results in 14,000 less lorry trips a year.

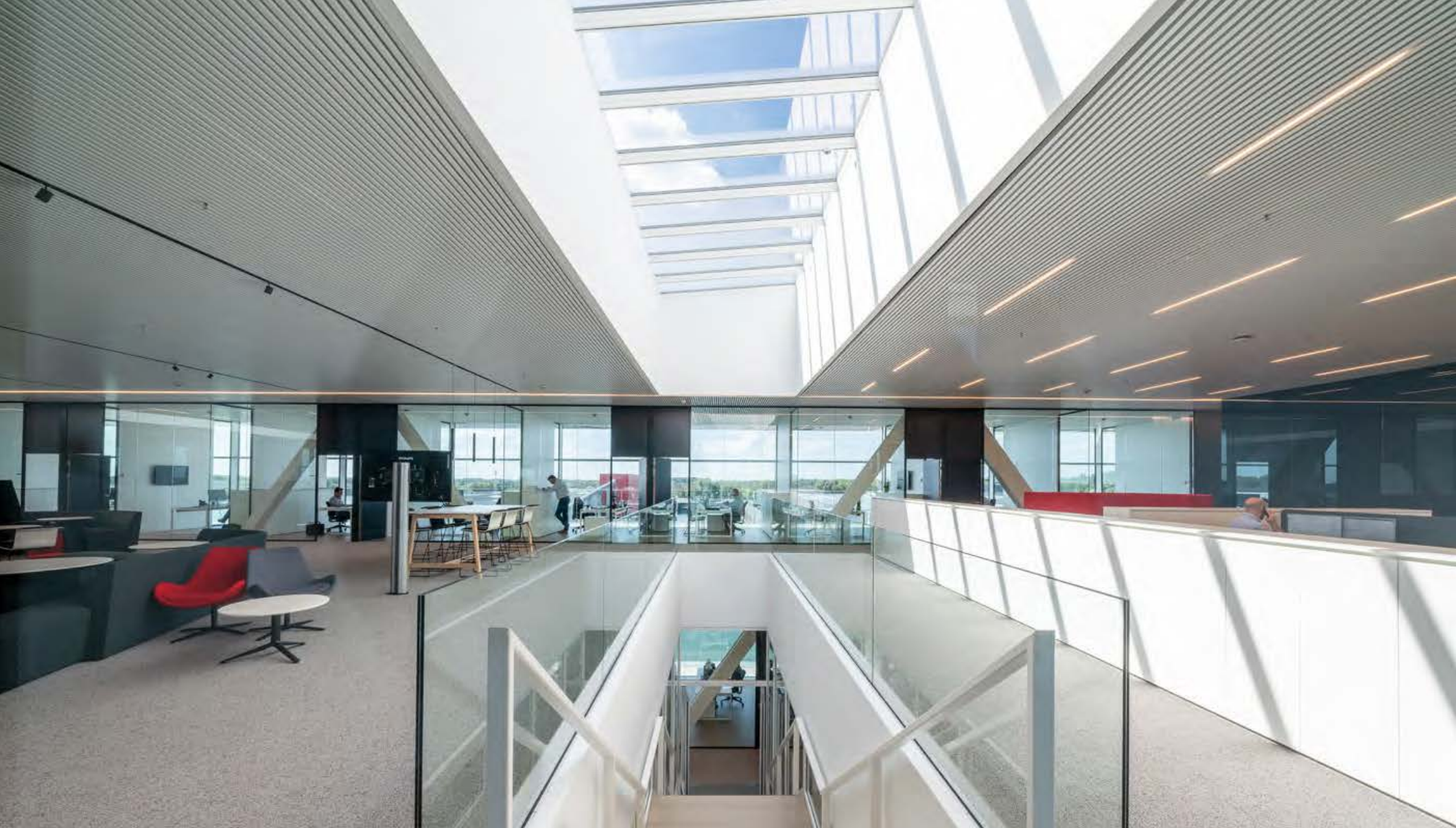
The architect was looking for an innovative solution to allow sufficient daylight into the central area. The answer for this was the VELUX Step solution, a large glass roof light that allows maximum daylight into the building.



red dot winner 2020

Product: VELUX Modular Skylights, Step Longlight 5 - 25°





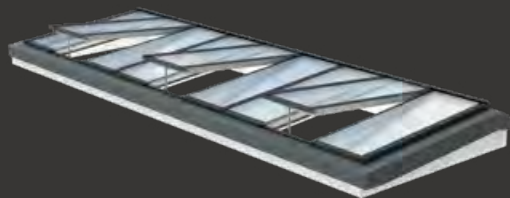
HEAD OFFICE CORDEEL Offices

Location: Temse, Belgium
Project type: New build
Architects: Binst Architects
Contractor: Cordeel Group NV
Year of construction: 2019
Photographer: Jasper Leonard

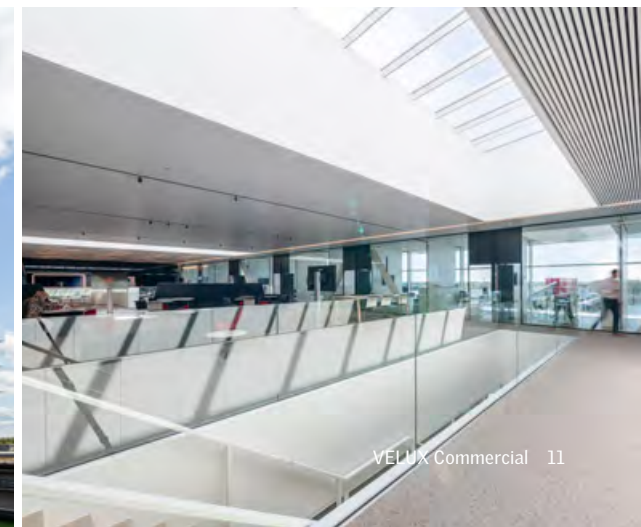
Realisation of a living business card:
the office villa.

Architectural design of the new head
office: not just because of its unique
floating location above the water, but
also because of its atypical shape.
The new building was built directly on
top of an old dry dock. It has the shape
of a bridge and rests on both banks,
with a length of 560 meters and a
width of 55 meters.

The rooflights in the middle of the
building illuminate the central stairs
and allow plenty of daylight into the
offices and central meeting places.



Product: VELUX Modular Skylights, Longlight 5°





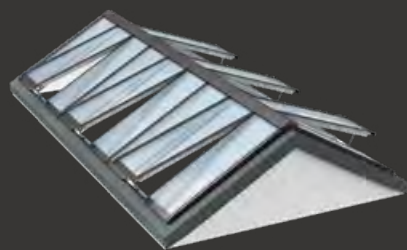
OFFICE BINST ARCHITECTS
Offices

Location: Antwerpen, Belgium
Project type: Refurbishment
Architects: Binst Architects
Contractor: Peeters – De Keersmaeker NV
Year of construction: 2018
Photographer: Jasper Leonard

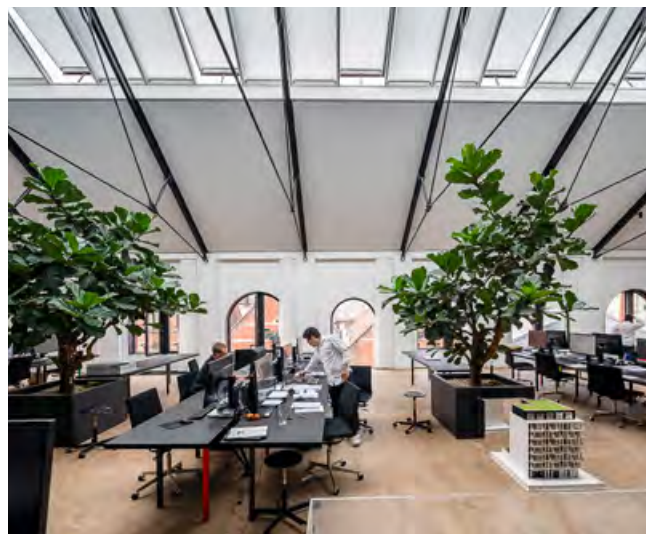
Former warehouse transformed into architecture office.

A location with history, situated in one of the most vibrant parts of Antwerp. The building was given back its authentic appearance by its own team of architects. The soul of the building has been preserved and forms a powerful integrated whole.

Fitted with a large ventilating glass roof. On sunny days, it feels like working outside under the blue sky. The outdoor feeling is completed by natural ventilation, which gives the building an extra dimension.



Product: VELUX Modular Skylights, Ridgelight 25-40°





FREINETSCHOOL DE HARP

Education

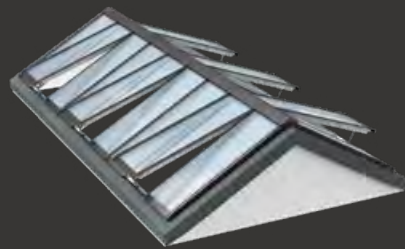
Location:
Project type:
Architects:
Contractor:
Year of construction:
Photographer:

Gent, Belgium
Refurbishment
Architectenbureau
Maarten Dobbelaere
Tectum Group
2020
Jasper Leonard

New rooflight reinforces historic character.

A school with a historic character in the heart of Gent. The central hall functions as a circulation space for teachers and pupils and serves as a play area and craft space.

The old rooflight has been renovated according to contemporary building standards, with a glass rooflight that rejuvenates the characteristic building.



Product: VELUX Modular Skylights, Ridgelight 25-40°





RHIZO LYCEUM OLV VLAANDEREN

Education

Location: Kortrijk, Belgium
Project type: Refurbishment
Architects: Sweco Belgium
Contractor: Vanmaercke NV
Year of construction: 2018
Photographer: Jasper Leonard

Designing with daylight as a starting point.

The RHIZO Lyceum is a school in which one instantly feels at home. It was originally a monastery with an accompanying church and was built in 1913. The new building consists of 1 construction layer.

Northlights have been installed to maximise the natural daylight. The solution with shed roofs increases the free space and further enhances the sense of spaciousness.



Product: VELUX Modular Skylights, Northlight 70°





BASE DE LOISIR
Public buildings

Location:
Project type:
Architects:
Contractor:
Year of construction:
Photographer:

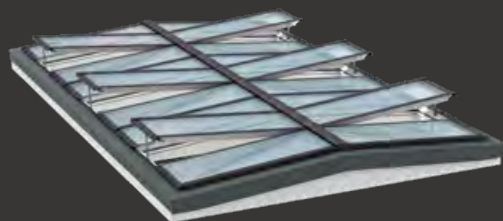
Neufchateau, Belgium
New build
Bernard COLLET Architecte
Batifer
2019
Robin ADAM

A bright and airy reception area connecting the exterior and interior of the building.

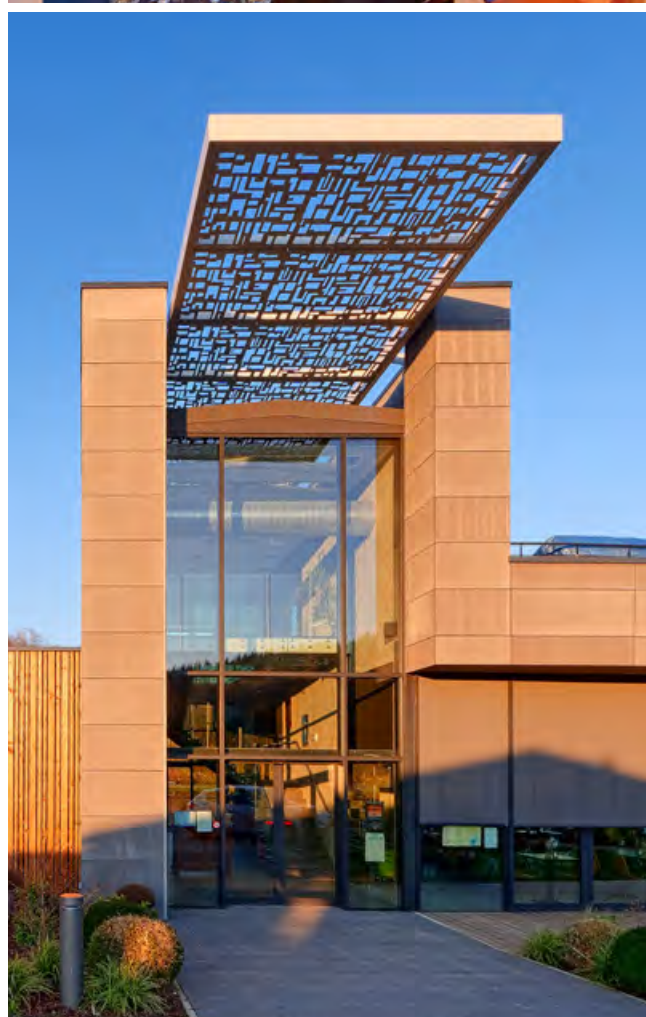
The new brewery/restaurant was built on the shores of Lake Neufchâteau in the wonderful location of the new leisure centre. The link between outside and inside was important and was created with eye for detail.

The movement of the water outside is reflected in the distribution of daylight inside.

The reception area is bathed in natural, playful light through the high-positioned awning.



Product: VELUX Modular Skylights, Ridgelight 5° with beam





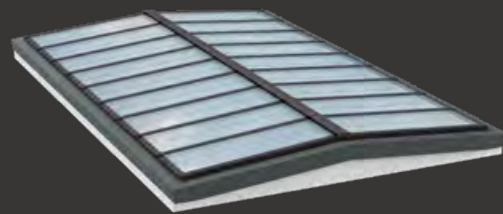
YGO
Retail and shopping malls

Location: Lier, Belgium
Project type: New build
Architects: Tecro & Krea
Contractor: Cordeel Group NV
Year of construction: 2018
Photographer: Jasper Leonard

Modular construction with prefab components are important for an efficient building process.

The new YGO complex is home to a collection with which you can furnish your entire interior. In this two-storey building, you will be taken on an inspiring journey.

The glass ridgetlight above the stairs creates a pleasant shopping experience.



Product: VELUX Modular Skylights, Ridgelight on Grider





DOVY DENDERMONDE

Retail and shopping malls

Location:
Project type:
Architects:
Contractor:
Year of construction:
Photographer:

Dendermonde, Belgium
New build
Ypsilon Architecten
Verhoeven contracting N.V.
2019
Jasper Leonard

Daylight enhances experience.

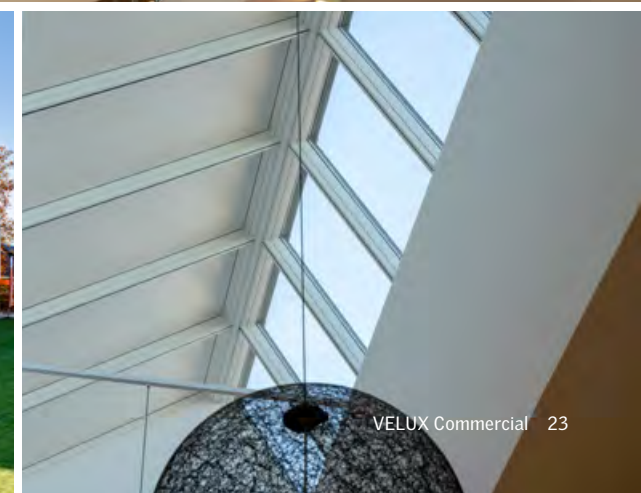
Finding the right colour for a new kitchen is not an easy task. Only daylight can show realistic colours.

In the new Dovy Keukens location in Dendermonde with plenty of daylight, visitors have a convenient way of shopping and are ensured to choose their dream kitchen.

The ventilating rooflights above the showroom serves as a point of reference for the visitors.



Product: VELUX Modular Skylights, Northlight 62-39°





AMPHIA HOSPITAL

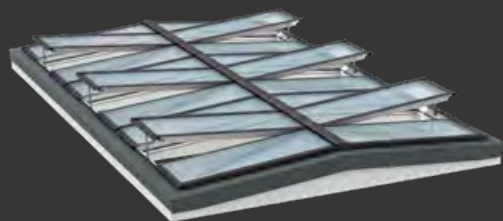
Healthcare

Location: Breda, The Netherlands
Project type: New build
Architects: Wiegerinck Architecten Arnhem B.V.
Contractor: V.O.F Bouw4Care
Year of construction: 2017
Photographer: William Moore

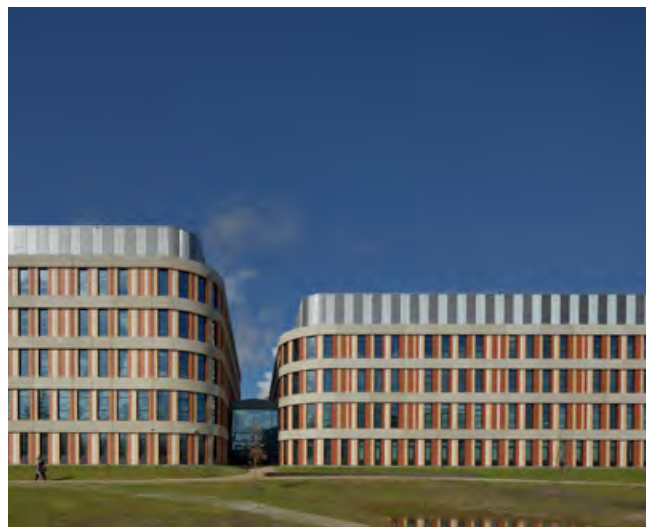
Direct daylight allows patients to experience a daily rhythm.

The two hospital locations in this ultramodern top clinical hospital have been merged. The design brings departments together; on the two lower floors there is one long corridor that connects all the surrounding buildings, which are equipped to meet the specific needs of the patients.

The central passage – which is flooded with daylight – is the backbone of the complex and connects the new building to the existing hospital.



Product: VELUX Modular Skylights, Ridgelight 5° with beam





ZAANDAM RAILWAY STATION

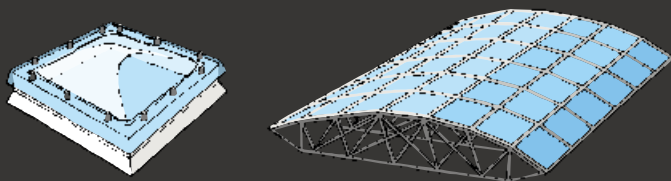
Airports and railway stations

Location: Zaandam, The Netherlands
Project type: Replacement
Architects: Karel Hendrik van Brederode
Contractor: Van der Ende Steel Protectors Group
Year of construction: 2018
Photographer: Pepijn Stok

Renovation of platform roof in characteristic railway station.

Zaandam railway station is a traverse station that was designed by Karel Hendrik van Brederode in 1983. The roof consists of a space truss that defines the station's character.

The roof was renovated with 489 BIK impact-resistant skylights and 8,000m² of steel structure. The planning, safe working practices and retention of the charm of the station all make this renovation a success.



Product: BIK-DC-DOME, BIK Polycarbonat Domes, JET windshields





SPORT COMPLEX DE PLUIMEN

Sports facilities

Location:
Project type:
Architects:
Contractor:
Year of construction:
Photographer:

Diksmuide, Belgium
New build
AVA Partners Architects & Planners
Artes Group
2019
Jasper Leonard

Sport facility a daylight benchmark.

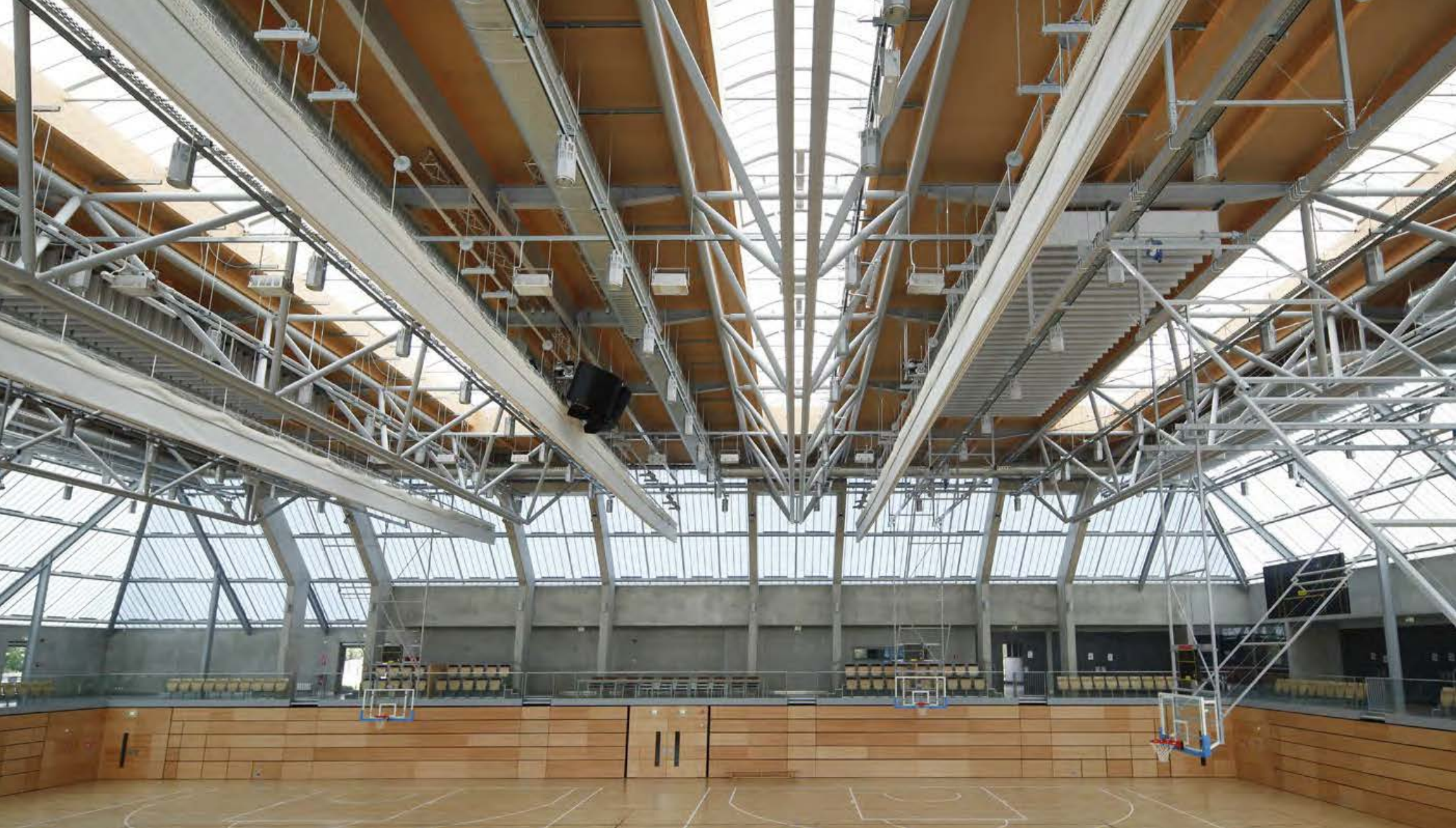
A place in which athletes indulge themselves. To give the facility a serene feel, it's designed as a park. Comfort and experience are key and design is based on the Trias Energetics-Principle. To improve the energy performance fossil fuels are used.

Due to the northern orientation on the steep side of the shed roof, no direct daylight enters the building. The athletes aren't blinded by the light. An opal film in the rooflights creates beautiful indirect light distribution.



Product: VELUX Modular Skylights, Northlight 55°





SPORT FACILITY BERTRANGE

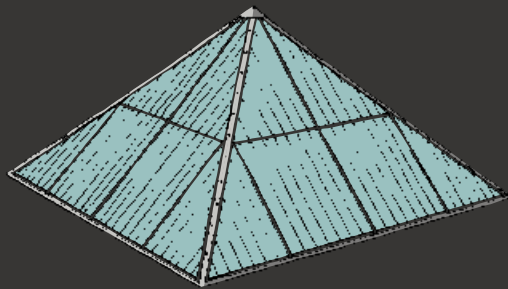
Sports facilities

Location: Bertrange, Luxembourg
Project type: New build
Architects: Architectuur & urbanisme 21
Contractor: Montage JET BIK Projecten B.V.
Year of construction: 2010
Photographer: Peter Witt

Ball-proof rooflights with smoke and heat exhaust ventilation (SHEV) for a safe sports location.

In this new sports hall, local basketball association plays at the highest level. Daylight is utilised to the maximum thanks to daylight solutions in roof and facade.

The use of GrilloDur® daylight elements in the facade and roof wasn't a difficult choice. The light is never disturbing and is always evenly distributed. Moreover, GrilloDur® is resistant to the impact of balls, an important feature when designing a sports complex.



Product: JET, GRILLODUR®





VAN DER VALK HOTEL MECHELEN
Hotels and conference centres

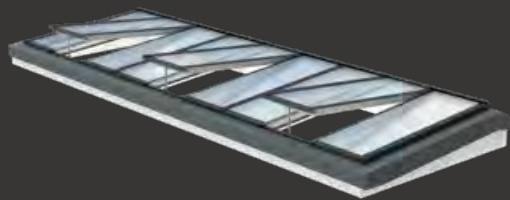
Location:	Mechelen, Belgium
Project type:	Refurbishment
Architects:	DAE
Contractor:	CIT Blaton
Year of construction:	2019
Photographer:	Jasper Leonard

Old swimming pool transformed into 4* hotel.

The hotel, partly consists of a newly section, is equipped with luxurious rooms, fitness, a restaurant and a cosy bar with an attractive terrace.

The former swimming pool is transformed into an ornamental pond. The building is a classified heritage building, elements had to be retained and authentic elements of the Art Nouveau building preserved.

Natural daylight is the perfect solution for preserving the old character combined with the modern requirements.



Product: VELUX Modular Skylights, Longlight 5 - 30°





FLUVIUS
Industrial and warehousing

Location: Wilsele, Belgium
Project type: New build
Architects: Archipelago
Contractor: Cordeel Group NV
Year of construction: 2018
Photographer: Jasper Leonard

Zero Energy Building concept for a minimal energy demand.

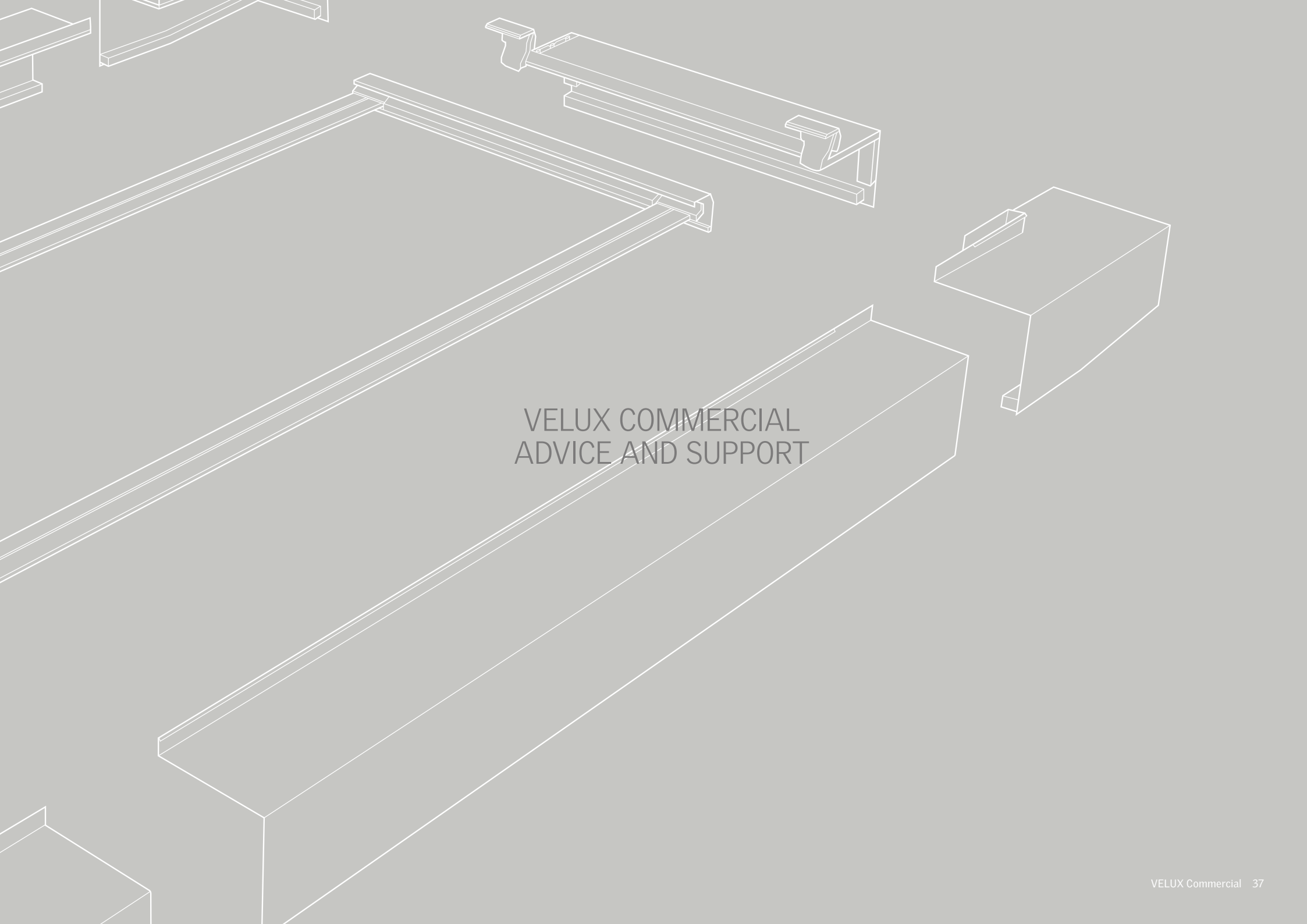
The clients wanted to realise a building fits with its sustainable philosophy and vision. The warehouse has a capacity of 1,460m² for the storage and is also equipped with a welding room and a small office space.

The northlights in the roof play a crucial sustainable role. Maximum daylight yield means that one of the major energy consumers in a warehouse – artificial light – is significantly reduced. While heat loss is kept to a minimum thanks to triple glazing.



Product: VELUX Modular Skylights, Northlight 90°





VELUX COMMERCIAL
ADVICE AND SUPPORT

SUSTAINABILITY AND CERTIFICATIONS



Sustainable buildings enhance the well-being and productivity of people working, learning and recovering in them.

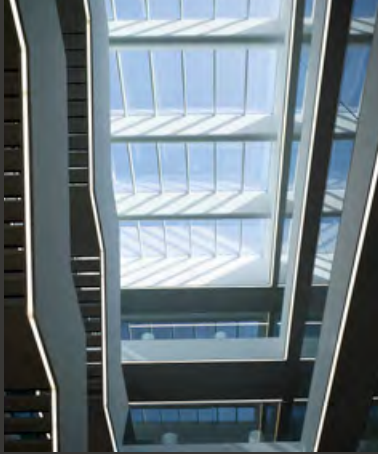
Sustainable building certifications are tools we can use to measure and document sustainability as well as support integrated design.

VELUX Commercial can apply into any certification scheme, and contribute to a healthy indoor climate, which is paramount for not only building performance but also for the well-being and productivity of its occupants.





BIBLIOTHEEK UTOPIA
BELGIUM
(BREEAM EXCELLENT)



DZNE
GERMANY
(BNB GOLD)



GENMAB
THE NETHERLANDS
(BREEAM EXCELLENT)



SIEMENS HEAD OFFICE
DENMARK
(LEED GOLD)



ENERGY TRANSITION COMPANY
THE NETHERLANDS
(BREEAM EXCELLENT)



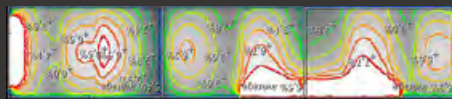
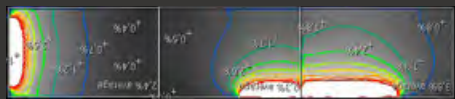
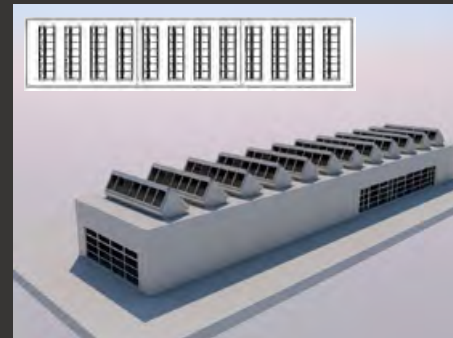
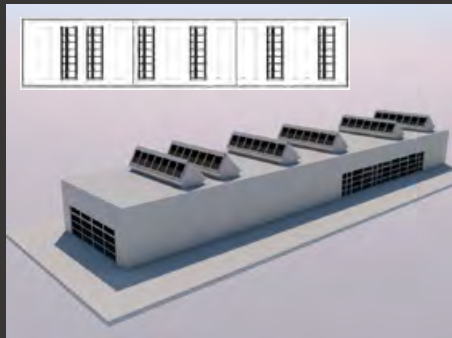
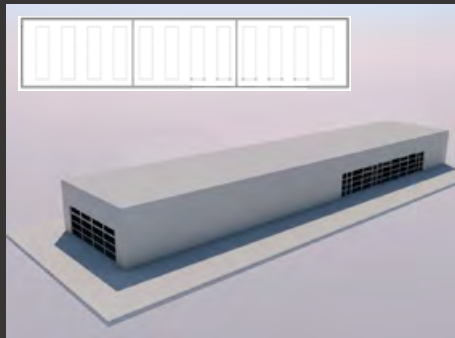
GREEN SOLUTION HOUSE
DENMARK
(DGNB GOLD & ACTIVE HOUSE)



GEELLEN COUNTERFLOW
THE NETHERLANDS
(BREEAM OUTSTANDING)



ADVICE AND TOOLS



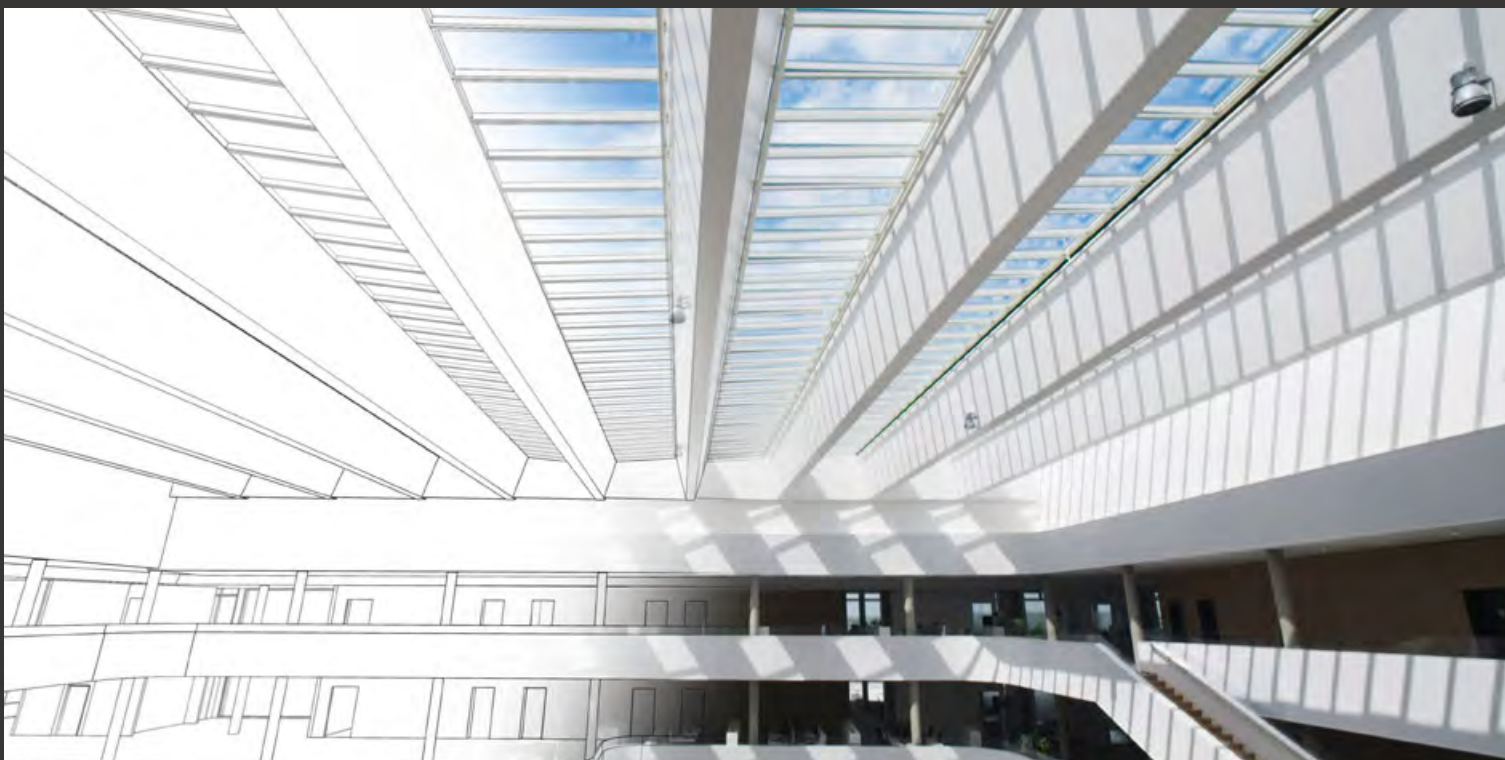
VELUX Daylight Visualizer

VELUX Daylight Visualizer is a professional lighting simulation tool for the analysis of daylight conditions in buildings. It is intended to promote the use of daylight and to aid professionals by predicting and documenting daylight levels and appearance of a space prior to realization of the building design.

Download the VELUX Daylight Visualizer on our website:
www.veluxcommercial.be

You can use Daylight Visualizer to:

- Calculate daylight factor levels
- Evaluate requirements for daylight provisions in the new European Standard for Daylight in Buildings - EN 17037
- Create or import 3D models
- Perform luminance and illuminance simulations under different CIE (The International Commission on Illumination – the Commission Internationale de l'Éclairage) sky conditions



Technical drawings and BIM

Planning, drawing and modelling until your grand ideas have achieved perfection. Use drag, drop and multiply functions – quickly, easily and accurately.

CAD/BIM tools are available for download to your favourite software so that you can start designing the roof lights right away.

For a faster and more value-driven design process.
Download the tools on: www.veluxcommercial.be



AUTODESK®
REVIT™

AUTODESK®
3DS MAX™



GRAPHISOFT
ARCHICAD

SketchUp



VECTORWORKS®
A BENTLEY COMPANY

AUTODESK
AUTOCAD 3D

SERVICE AND SUPPORT



Design

Consultancy

To help you get started, we offer expert guidance even before your project gets approved.

Technical documentation

All technical documents are available for download on our websites.

Specification

Our experienced building consultants are ready to help you specify your projects.



Installation and maintenance

Support

Once your project is underway, we will help you track your progress and offer on-site consulting on projects and critical issues.

Training

To ensure high safety and efficiency on the construction site, we offer various forms of training. The training can take place directly on the construction site, where your project is located. Installation can also be done by VELUX Commercial. Contact us for all possibilities.

Maintenance

Professional maintenance of SHEV projects as well as the care of glass constructions.



Daily operation

After sales

A number of tools and accessories are available to help optimise your solution, if or when the requirements evolve.

User guidance

To maximise performance output, we are there to guide you on the different components of the solutions and we offer training.

Product service

Should the system, for some reason, require professional service, our team of VELUX service technicians will do all they can to solve the problem to everyone's satisfaction.



Guarantee

Our VELUX Modular Skylights are supported by a 10-year guarantee. Blinds, actuators and other electrical components that are a part of the modular system come with a 3-year guarantee. The guarantee is subject to correct installation and usage. Guarantees are available on our website.



Contact

Our aim is to provide all the tools and answers to make your project as simple and trouble-free as possible. Thus, we offer a wide range of expert support and consulting from before the project starts to well after its completion. To get in touch, please contact us: www.veluxcommercial.be
vms.v-b@velux.com



VELUX COMMERCIAL
INSPIRATION

INSPIRATION



1



2



3



4



5



6



7



8



9

- 1 **Project:** Utopia Library
Product: VELUX Modular Skylights
Photographer: Jasper Leonard
- 2 **Project:** Somfy Lighthouse
Product: VELUX Modulair Skylights
- 3 **Project:** Europahal RAI
Product: JET-DC-GLAS
- 4 **Project:** Alrijne hospital
Product: VELUX Modular Skylights
Photographer: Dick Holthuis
- 5 **Project:** Multifunctional centre
Vrijheidswijk
Product: JET-GRILLODUR®
- 6 **Project:** Office Appèl
Product: JET-DC-GLAS
Photographer: Norbert van Onna
- 7 **Project:** Aqua Mundo Center Parcs
Product: JET-DC-DOME
Photographer: Bryan Hurkx
- 8 **Project:** Cultural Center Bornem
Product: VELUX Modular Skylights
Photographer: Jasper Leonard
- 9 **Project:** bol.com
Product: JET-Vario-Norm

**VELUX
COMMERCIAL
INSPIRATION
BOOK**